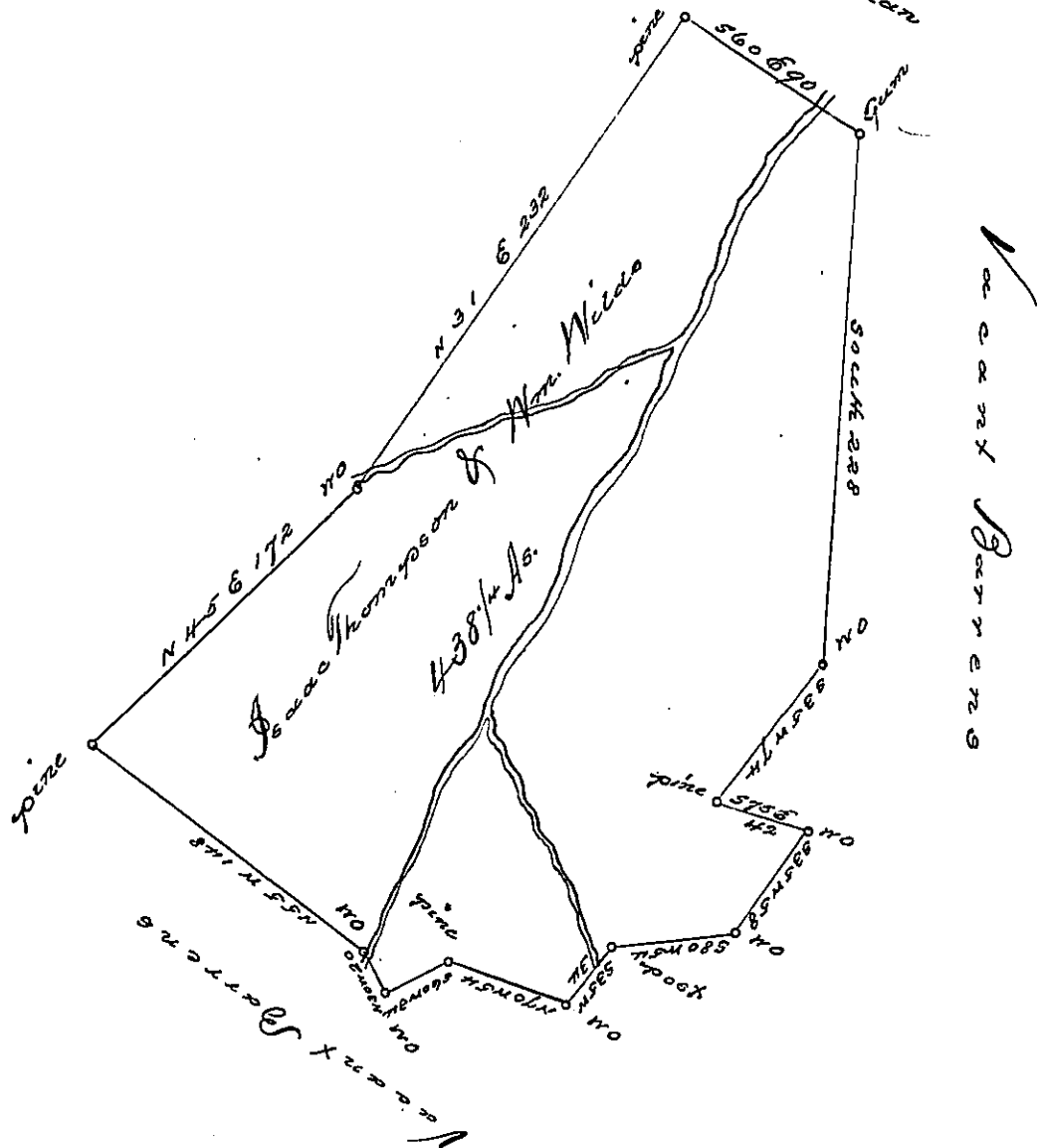


C. 123 -288
Asa McClean



Situated on the Wooding Bridge Creek in Dublin Township Bedford County Containing Four hundred and thirty eight $\frac{1}{4}$ acres. Surveyed for Isaac Thompson and Wm. Weids the 20th Day of December 1787 In pursuance of a Warrant Dated March 17th 1786 in W^t. for 170 acres

Geo Woods. D.S.

To Daniel Brodhead Esqr. D.S.

Accepted
for. Sur. General

IN TESTIMONY that the above is a copy of the original remaining on file in the Department of Internal Affairs of Pennsylvania, made conformably to an Act of Assembly approved the 16th day of February, 1833, I have hereunto set my Hand and caused the Seal of said Department to be affixed at Harrisburg, this third day of May, 1898

James W. Feltz
Secretary of Internal Affairs.